

# Twickenham & Richmond TRIBUNE

THE RIGHT HON. GENERAL  
WILLIAM FIFTH VISCOUNT  
HOWE, P.C. K.B.  
(1729 - 1814)  
COMMANDER OF THE BRITISH FORCES  
IN AMERICA 1775 - 78  
MEMBER OF PARLIAMENT  
FOR NOTTINGHAM 1758-80.

## Contents

- TickerTape
- COVID-19
- Local Postcard Page: St Johns Hospital- Amyand Park Road
- Parking Improvements in Barnes
- Hampton North Ward
- Why would I vote yes?
- Twickers Foodie
- Signs Of Twickenham
- WIZAround the World
- General Howe's Twickenham Resting Place
- 12 weeks to go
- Arts Richmond Young Writers Festival
- Sport

## Contributors

- Alan Winter
- Councillor Geoffrey Samuel
- Alison Jee
- Doug Goodman
- Bruce Lyons
- Mark Aspen
- World InfoZone
- Deep Patel
- St Mary's University
- Zoological Society of London
- RFU
- Brentford FC
- GB News
- LBRuT

## Editors

Berkley Driscoll  
Teresa Read



The Right Honourable General, William 5th Viscount Howe KB PC  
Gravesite, Twickenham  
Photo by Berkley Driscoll

29th September 2023

T&RT



# TickerTape - News in Brief

## South Western Railway – Strike Action

Find full details [HERE](#)

### Saturday 30 September – ASLEF strike action

There will be **NO** train services, other than a limited service between Waterloo and Basingstoke/Guildford. For a list of open stations, please click [here](#).

### Sunday 1 October – normal service

A normal Sunday timetable will operate.

### Monday 2 and Tuesday 3 October – ASLEF overtime ban

We expect to run the majority of our normal weekday timetable, however a small number of services will be cancelled.

### Wednesday 4 October – ASLEF strike action

An extremely limited service will operate **between Waterloo and Feltham** (2 trains per hour). Trains will call at Vauxhall, Clapham Junction, Wandsworth Town, Putney, Barnes, Mortlake, North Sheen, Richmond, St Margarets, Twickenham, Whitton, Feltham

There will be **NO** other train services.

### Thursday 5 and Friday 6 October – ASLEF overtime ban


We expect to run the majority of our normal weekday timetable, however a small number of services will be cancelled.

## TfL: Tube Strikes

On **Wednesday 4 and Friday 6 October**, there will be significant disruption across the Tube network due to planned strike action by station staff.

If the strikes go ahead, most Tube services will be severely impacted or will not run on either day, with disruption expected into the mornings of Thursday 5 and Saturday 7 October as the network recovers following the strike action. The Night Tube will not operate on Friday 6 October.

Check [HERE](#) for more information.



**skyelectrical**

Replacing your halogen recessed lights with LEDs will:

- ✓ SAVE ENERGY
- ✓ SAVE YOU MONEY
- ✓ PROVIDE BETTER LIGHTING

So...

- ✓ CALL US TODAY FOR A FREE HOME ASSESSMENT AND QUOTE

For a timed appointment please call Sky Electrical on 020 8894 1799  
22 Fifth Cross Road, Twickenham, Middlesex, TW2 5LF  
[www.skyelectrical.co.uk](http://www.skyelectrical.co.uk)

**020 8894 1799**  
[info@skyelectrical.co.uk](mailto:info@skyelectrical.co.uk)

# Covid 19

Teresa Read

## World Health Organization

### COVID-19 Epidemiological Update published 29 September 2023

Globally, 96 countries are reporting COVID-19 cases and 37 are reporting COVID-19 deaths. Note that this statistic does not reflect the actual number of countries where cases or deaths are occurring.

- Among countries reporting, the number of reported cases and deaths have declined, with over 685,000 new cases and over 1,900 new deaths reported during the 28-day period of 28 August to 24 September 2023, a decrease of 55% and 34%, respectively, compared to the previous 28 days (31 July to 27 August 2023).
- The recent declining trend in the number of new cases reported globally should be interpreted with caution due to decreased testing, sequencing, and reporting, alongside reporting delays in many countries.
- The increase of new cases reported during the 28-day period of 31 July to 27 August 2023 by the African Region is due to backlog reports for some countries, resulting in an artificial increase of cases. These data should be interpreted considering this limitation.
- During the past 28 days, 50 and 39 countries make available data on hospitalizations and admissions to an intensive care unit (ICU) at least once, respectively. At the global level, during the past 28 days (21 August to 17 September 2023), a total of 95,999 new hospitalizations and 985 new ICU admissions were reported, an increase of 42% and 12% respectively, compared to the previous 28 days (24 July to 20 August 2023).
- WHO is currently tracking several SARS-CoV-2 variants, including three variants of interest (VOIs) – XBB.1.5, XBB.1.16 and EG.5 – and seven variants under monitoring (VUMs). Globally, EG.5 represents 33.6% of sequences shared with GISAID and is presently the most prevalent VOI and has been reported by 73 countries.

**At the country level**, the highest numbers of new 28-day cases were reported from the Republic of Korea (392,073), Italy (60,885), **the United Kingdom (29 959)**, the Russian Federation (28,441) and Mexico (26,746).

The highest numbers of new 28-day deaths were reported from Australia (734), Italy (232), the Republic of Korea (122), Mexico (106) and India (103).

**The European Region** reported over 177,000 new cases, a 19% increase as compared to the previous 28-day period. Twenty-two (36%) of the 61 countries for which data are available reported increases in new cases of 20% or greater, with the highest proportional increases observed in Azerbaijan (+660%), Liechtenstein (+550%) and Bosnia and Herzegovina (+382%).

**The highest numbers of new cases were reported from Italy (60,885), the United Kingdom (29,959) and the Russian Federation (28,441).**

The number of new 28-day deaths in the Region decreased by 54% as compared to the previous 28-day period, with 661 new deaths reported.

The highest numbers of new deaths were reported from Italy (232), Sweden (63) and the Russian Federation (51).

### **Booking a vaccination**

<https://www.nhs.uk/nhs-services/covid-19-services/covid-19-vaccination-services/book-covid-19-vaccination/>

- **Click on the “Start Now” button** and you will be taken through an easy **Click button** procedure to book your appointment at a suitable venue.
- Vaccination appointments can be booked on the NHS website or the NHS App.

**If you do not have access to the internet telephone 119.**

- You can use textphone 18001

**The Maple Leaf Pharmacy on Twickenham Green will give both COVID and flu vaccines. If you have problems booking with the NHS website you can phone the Maple Leaf for advice and possibly an appointment on [020 8894 5034](tel:02088945034)**



**The Tree Agency**

darryl parkin

The Treehouse  
25 King Edwards Grove  
Teddington, Middlesex TW11 9LY  
Telephone 020 8274 0107  
Mobile 07960 123580  
Fax 020 8274 0119  
info@thetreeagency.co.uk  
www.thetreeagency.co.uk



# The Local Picture Postcard Column Part 216

By Alan Winter

## St Johns Hospital- Amyand Park Road

In 1879 the philanthropist Miss Elizabeth Twining of Dial House, Twickenham, purchased Amyand House and its grounds for £3,000. She wished to establish a hospital in memory of her family, who had been associated with the Twickenham area for seven generations.

A trust deed was drawn up which stated "The institution shall be known as the Twining Hospital and shall be dedicated to St John the Baptist". It would contain an Out-Patients Department, male and female wards, rooms for nurses and a house for the resident Medical Superintendent. Miss Twining provided the funds for the Hospital to be built. She had devoted the greater part of her life to the poor and gave almost the whole of her resources to the founding and erection of the Hospital using the very best materials and workmanship. Postcard number 1 shows the Hospital in about 1907. A very smart building.



St Johns Hospital was officially opened on 25<sup>th</sup> May 1880 by the Duchess of Teck and her three children. The Duke of Teck arrived later, on horseback.

The Hospital consisted of an Out-Patients Department, a Dispensary and two small wards of 6 beds each- one for men and one for women.

Amyand House became the residence of Dr Benthall, previously of King Street, Twickenham, who had been appointed the Medical Superintendent. Other members of the medical staff acted in an honorary capacity and were not paid.



The early years of the Hospital were dominated by financial crises. The methods of running the Hospital were amateurish and unbusiness-like and didn't even have any qualified Doctors on the Committee.

In June 1882, less than two years after they had opened, the wards were closed. They re-opened the following month following the appointment of both a new Secretary and Committee.

Dr Benthall was given notice but took legal action for his re-instatement and financial compensation. As a result the Hospital was approaching bankruptcy and closed in April 1883 while the Committee applied for a

new scheme not to include a Resident Medical Superintendent under the terms of The Trust Deed. In the event Dr Benthall lost his case with costs.

The Hospital re-opened on 1<sup>st</sup> June 1885 without a Resident Medical Superintendent. Local G.P.s (General Practitioners) took over the care of in-patients and were now included as Committee Members along with practical business-like men.

In January 1932, due to the increasing number of road traffic accidents, the two main wards were extended and



re-equipped. The hospital now had 34 beds. Postcard Number 2 shows a busy ladies ward.

In 1933 work began on a building for the X-Ray department which opened in 1935.

Also in 1935, Newland House which was an adjacent property, was purchased to provide an office for the Hospital Secretary and accommodation for the nursing staff.

In 1937 the exterior of the Hospital and Amyand House were painted and the wards were thoroughly cleaned and redecorated.

The weekly cost of an in-patient was now £3 13s 0d (£3.65) and the average stay for an in-patient was about 20 days. During 1937 there were 12,591 attendances to the Out-Patients Department. There were plans for expansion but the uncertainty of threatening war delayed the project.

In 1938 the Hospital prepared itself to work within a war basis. During 1940, the buildings suffered twice through enemy action.

In 1948 the Hospital joined the NHS under the control of the North West Metropolitan Regional Hospital Board. The board proposed to make it a hospital for chronically sick patients but this was prevented by local opposition. It remained a GP Hospital with two wards of 16 beds each although 10 beds had to be given over to accommodate chronically sick patients from other hospitals in the region.

Throughout the 1950's and 60's the authorities within the NHS often stated that St Johns Hospital was unsuitable and had outlived its purpose. In 1965 the Hospital had 36 beds for mainly acute patients.

In 1974, following a major NHS reorganisation, the hospital was still part of the North West Thames Regional Health Authority but two years later it was transferred to the control of the Hounslow District Health Authority. It now had 33 beds.

St. Johns Hospital closed in 1985, despite great public protest-3,000 personal letters had been sent to the Minister of Health and a petition with 28,000 signatures presented to Parliament but all to no avail.

In 1992 the Hospital buildings were refurbished and a Day Centre built for elderly mentally impaired (EMI) patients.

St Johns and Amyand House reopened in 1995 as a mental health care facility run by the South-West London and St George's Mental Health NHS Trust.

Our final postcard this week shows a sight few of you will remember with the hospital sitting it out in a snow storm in the 1920's.

Any questions on this subject, or ideas for future articles, please drop me a line. I am always looking for old postcards or old local photographs, so if you have any that are sitting unwanted in a drawer, in a box in the loft, or the garage or under a bed, do contact me on 07875 578398 or by email to [alanwinter192@hotmail.com](mailto:alanwinter192@hotmail.com) I would like to see them and I pay cash!





# CrusaderTravel

020 8744 0474

[crusadertravel.com](http://crusadertravel.com)

Escapology Experts

[info@crusadertravel.com](mailto:info@crusadertravel.com)



Your friendly local Travel Agency  
established in Twickenham since 1966

With over 50 years experience we pride ourselves on being able to offer an unrivalled service with attention to detail. Come and have a chat with us in our cosy office off the Church Street Square, we are open 6 days a week from 11am until 6pm (Closed Sunday)









# Marble Hill House: Gardener Wanted

Do you have a passion for horticulture and plants? We may have the job for you - we are looking for someone to help maintain our beautiful parkland.

Would you like to use your passion for gardening to nurture one of the country's most prestigious gardens and inspire visitors from across the world? Then join us as Gardener at Marble Hill House. Marble Hill House, brimming with historic character and exciting gardening opportunities, offers a remarkable setting in which to take the next step in your career.

As a Gardener, you'll be playing a vital role in ensuring our gardens are wonderful places to spend time in. You'll help us find imaginative ways of bringing to life the stories that our gardens tell, helping visitors of all ages to make new discoveries.

We're looking for someone who is qualified at least to an NVQ level 2 in amenity horticulture and ideally hold PA1 & PA6 spraying certificates.

Previous experience of working in a high quality horticultural establishment ideally open to the public would be beneficial and it would be great if you have had some experience of working alongside volunteers. You should be enthusiastic, have the ability to work to high standards and be effective and efficient when working on your own or as part of the wider team.

We would be delighted to hear from you, if you would like to talk to us about this role before you apply, please contact Corinne Price, Head Gardener, at [Corinne.Price@english-heritage.org.uk](mailto:Corinne.Price@english-heritage.org.uk)

Full details [HERE](#)





# Friends of the River Crane Environment AGM

The FORCE AGM will be held on Wednesday 4th October at the Twickenham Club in Church St from 8pm.

We will be celebrating our 20th anniversary with bubbles and Ed Harris will follow our formal business with an exploration of what the Romans did for the Crane Valley.

All members are welcome - and you can also join on the night.

**FORCE**

Friends of the River Crane Environment

Established 2003



## Help Hampton Wick Royal Cricket Club

As we look to rebuild our pavilion we will need some help.

If you're a Quantity Surveyor, Landscape Architect, Archaeologist, Environmental, Arboricultural, Transport, or Flood Risk Consultant... we need you!

Please contact [events@hwrcc.co.uk](mailto:events@hwrcc.co.uk)

Following a devastating fire that destroyed our pavilion we desperately need funds to get ALL SPORT back on at The Wick as soon as possible.

Overnight on 6 September, a catastrophic fire destroyed our pavilion. This left all sports teams that call The Wick their home without essential facilities such as changing rooms, showers, and toilets.

We need to raise enough money to acquire Portakabins that will provide those necessary facilities for adults, kids, men and women.

Please visit our Crowdfunder page [HERE](#)



Photos courtesy HWRCC





# HAMPTON NORTH WARD

Councillor Geoffrey Samuel

## ABOUT OUR COMMUNITY

### **The Shooting Star Childrens' Hospice.**

I have supported this hospice from the time when it was still being built in 2005.! My former Council colleague, Kate Howard, once ran a marathon in support. I was pleased to be invited to meet two of their Managers recently. On average 22 local families use its support- therapies, drop-in sessions, bereavement support, respite nights, symptom management and end of life care. More recently it has been joined with an hospice in Guildford and the annual cost for both hospices is around £10m. Although the Government increased the grant funding from public funds covers under 30%. It really needs our support! I was pleased to learn that a number of local people work voluntarily in the hospice and ordinary residents as well as local organisations [one recent Mayor]engage in fund-raising. In the next Newsletter I will discuss how we can help at Christmas-time.

### **The White House**

As reported before, next year The White House will become a Family Hub rather than a Community Centre. There is no commitment to run the courses, classes and activities – or the Café- which the YMCA has been providing.

### **All Saints Church.**

It is with embarrassment that I report that I put the wrong date for the Official; Opening of the new Hall in my diary with the result that my wife and I arrived exactly one week late. Our community-minded Vicar kindly gave us a tour of the excellent new facilities. These facilities –all open to the public – are of the highest quality. Three splendid halls of different sizes, a meeting room, two kitchens and much else. Residents and groups that have up to now been using the facilities at The White House will find this an excellent new venue – and reasonably priced !

## UP-TO-DATE REPORT ON LIVE ISSUES

- As expected the response from the leadership of **Boots** was unhelpful and uncompromising.
- A senior Manager from **Thames Water** has phoned me about both the issues which I raised.



- Graffiti: local residents became so frustrated with the graffiti at the bus stop opposite **Old Farm Road** that they have attempted to clean it themselves –but some remain. The council has not responded to my request for the name of the officer responsible for removing graffiti.
- In October I will be meeting a Director of **RHP** when I shall raise issues in **Bishops Grove, Roy Grove, Stevens Close and Maple Close**
- Problems with the dangerous obstruction of pavements by Lime Bicycles continue.

## OCTOBER COUNCIL MEETING

As usual I am allowed two questions. One will relate to problems of repairs, 'neighbours from hell' and other issues increasingly experienced by social tenants. Residents – especially those bound for the Crematorium or the 'Dump' –report delays varying from 11 to 27 minutes caused by work at Manor Circus due to last until next June. My question is asking for action!

## DIGITAL EXCLUSION

I thank residents for telling me of their experiences. I have made clear that I will support further Council 'digitalisation' only if there is specific provision for the digitally excluded. AgeUK is mounting a national campaign which I will be discussing with them next week.

## LOCAL RAILWAYS.

I am pleased to publicise a new book by a long-standing local resident. This discusses local railways with references including the Shepperton Line, Kempton Park Station and the Hanworth Pumping station. Priced at £13 you can obtain a copy by contacting [rbond15311@aol.com](mailto:rbond15311@aol.com)

## R70

A local resident has justifiably complained that the single-decker R70 at the end of the school day is often so filled with school children that there is no room for other passengers. She suggested either a double-decker or an additional bus. I have a good connection with Abellio but as buses are the responsibility of TfL I have also asked Nick Rogers, our GLA member, to raise it. In the past I have known many occasions when a bus company has run an additional bus at this time.



# WHY WOULD I VOTE YES

By Bruce Lyons

Well why wouldn't I vote yes. – That is the question.

I can understand the quandary. I have lived and worked in Twickenham since the 1960's and seen a lot! It seems light years ago when my late wife Hedda and I settled in Church Street in our own newly found little bolt hole, a massive move from Brook Road, St Margarets and it was good to us, and I think we reciprocated.

Church Street wasn't the "Jewel in the Crown" it became – that took years of hard work by a dedicated team of street traders, my daughter Shona's creative and organising talent, and the constant support of Hedda. We also had huge help from LBRUT. The TCM (Town Centre Management Board, The RFU, Richmond Borough in Bloom and more. But by 2022 I'd gotten old and couldn't find the strength to care for my ailing wife, chair the street, and encourage Shona to continue and together run the business with her (as we still do) as well as the affairs of our street. So, we stepped back, but much had been achieved by then! So, it is sad to see so much we worked on slipping away – I guess it is a matter of Civic Pride that we kept it going. Overtime we won awards aplenty – London in Bloom, Lord True Floral Competition, Street Competitions and more, we ran events, Craft markets, French Markets, Festivals and more. We joined the steering committee to get a BID (Discover Twickenham as it is called now) voted in. But why now would I vote YES? – or why would one vote NO? Kevin, the Chair says without a BID you collectively lose out on a large POT of collective funds (£1.4 million to be nearly precise over 5 years) and he is correct. But wait a minute look at their website – Discover Twickenham's that is, Twickenham is Rugby and there is only one mention on the site of Stadium Events – it doesn't even head it as Rugby! I went to the BID meeting on the 7th of September at the Exchange A very Eloquent presentation by Kevin and a lot of chat about the new energy being put into the relationship with the RFU - Sports and Engagement, but this was just before the World Cup and where in our town was there any sign of our connection?

Pubs told my grandson that they weren't showing the matches as there was little call for it, really, it took a biltong seller in church street to get the flags up in Church Street. The new chair of the Church Street Association said did it really matter that much- it is on for over a month isn't it? well it did to him (from Limpopo), and he is no Rugby Supporter, as far as I know. They have all the flags and since 2012 there are 200 flagpoles above shops and pubs all over Twickenham put there for Xmas Trees and Flags, flagpole sockets supplied by Belmont's bakeries and the labour paid by the Lord Mayor of London's office - I know because I negotiated that, and the flags were bought by us with money from the RFU! So my conundrum is why should I say YES. It won't make a material difference to the result and I will still have to pay the Levy – that is law but is it focussed on the right issues?

The TCM (the town centre management board) around this time commissioned a survey – what were Twickenham's most import assets – The Result = THE RUGBY and THE RIVER THAMES! Surprised – not exactly, and that survey is in the public domain – so what is all this debacle about the Riverside Site, derelict till now, my daughter can remember being one of the last to swim there and she is in her fifties! Gordon Bennett can't anyone get a move on.



So back to my question. The BID thinks Music is more important, I guess, as an Eel Pie Islander I can have some empathy with that view, but Rugby is more easily associated with Twickenham almost anywhere in the world.

So, Discover Twickenham is one of ONLY 330 odd BIDs in the UK you'd have thought our BID would have focussed on an obvious trump card – RUGBY – I know people that live here simply because of the Rugby, daft you might say, but it is a fact. I would have thought that from the start, partnership with RFU/THE STOOP, Premiership Rugby and more would be the focal point of their energies. I also find the dialogue between traders with their problems and the BID and The CSA are strained, where they should be on easy to call basis and problems with the administration should be smoothed by their good connections with the council, but traders tell me that that is not the case. They find the officers unapproachable – or even rude. On a street level I would have thought that the CSA Team would have been able to sort out the damaged proscenium at Milestone & Collis caused over two years ago by a vehicle trying to get past a bollard sorted - but it is still an eyesore today and why can't the planters be maintained at the top of the street – it was the best advert for us over years and maintained by Shona and I since 2005 till last year.

Just now they are in their Autumn colours of neglect – shame on you.





# Have your say on proposals to improve Powdermill Lane and Hanworth Road

We are looking to make improvements in Heathfield ward, to Powdermill Lane and Hanworth Road. The works will improve the character and appearance of the street near the shopping parades.

This improvement work would help enhance the experience for residents and visitors.

We have commissioned specialist urban designers, Metropolitan Workshop, to come up with some proposals to improve these areas. We are now sharing the proposals and invite you to have your say and provide feedback.

The consultation document [here](#) sets out the proposed ideas for Hanworth Road and Powdermill Lane Parades, focusing on 'urban greening'. The ideas have been developed in collaboration with stakeholders, whose local knowledge, enthusiasm and support will help to secure the long term future of the streets.



The [public consultation](#) is now open and closes on Sunday 29 October 2023.

If you require any hard copy materials or another format please contact us on 020 8891 1411 or email [consultation@richmond.gov.uk](mailto:consultation@richmond.gov.uk).





TEDDINGTON SOCIETY HORTICULTURAL GROUP TALK

# ENCOURAGING WILDLIFE IN YOUR GARDEN\*

BY ANDREW HALSTEAD  
RETIRED RHS PRINCIPAL ENTOMOLOGIST

*\*without it becoming a weed-filled  
wilderness*

**8PM, TUESDAY 3 OCTOBER**

**TEDDINGTON CONSTITUTIONAL CLUB, STANLEY ROAD**

**ENTRANCE FEE: £5 PER ADULT**





## SILVER BIRCH: A JEWEL IN CHISWICK'S CROWN

I've got some fab news for anyone based around here who fancies a short trip on the 267 bus: Chiswick High Road has a brilliant neighbourhood restaurant, Silver Birch. It's actually not a new restaurant - it's been open for a couple of years now. But the big news is that a new head chef - Nathan Cornwell - has earlier this year taken over the stove - and he's one who's likely to have already been noted by those Michelin inspectors.



The appointment of Cornwell coincided with the restaurant's second birthday last May. And it's a very smart move! He sports a serious CV that includes stints at Copenhagen's Geranium (3 Michelin Stars), Stockholm's Kadeau and Oaxen Krog (2 Michelin Stars respectively), 2 Michelin-starred Le Champignon Sauvage in Cheltenham. He had previously served as head chef working alongside double Michelin-starred chef patron Mark Birchall at multi-award-winning The Barn at Moor Hall in Lancashire. His four year tenure there certainly brought a wealth of top culinary talent to head up the Silver Birch brigade.

The restaurant is situated at the heart of busy Chiswick, just past Turnham Green Terrace, and offers an outside dining terrace too. We were shown to a table at the rear of the restaurant that had a view of the open kitchen. The restaurant decor is modern, light and airy, with plenty of wooden surfaces. At other restaurants, the plethora of hard surfaces might have meant a noisy evening, but it wasn't here and mellow, gentle music was an ideal background.

I couldn't resist starting with a Smoked Rosemary Martini (£14) and my husband ordered a beer. While enjoying these, it was fascinating watching the attention to detail of the sous chef and rigorous checking of each dish at the pass. My martini was exceptional. I understand that they source their infused vodka from a small distillery in Cornwall. It was so good: salty, smoky and deliciously 'dirty' and certainly set the scene for an exceptional meal.

We were presented with a selection of delicious snacks (cured trout with seaweed emulsion and trout roe, pig's head fritter and a warm blue cheese cracker with Parmesan tuile) They were elegant, beautifully balanced and a stunning prelude.



An amuse bouche followed: Bacon with a pea veloute. Wow! The bacon was in fact a crumble topping, and the whole dish was bursting with freshness and depth of flavour. It was accompanied



by sourdough bread with lovage butter. Lovage can be quite an unforgiving herb, so I was intrigued to see if it was balanced correctly - and of course it was. The use of herbs throughout the meal was exceptional.

The sourdough was deliciously sour and springy with a great crust. It would have felt greedy to ask, but nice to have the bread replenished, as all the food was so fabulous we wanted to wipe our plates clean!

My husband ordered confit duck egg, smoked onion, coppa, summer truffles (£15) and declared it rich and unctuous. The truffles on top were very generous too (not that I was allowed to steal any from his plate!). I ordered roasted Isle of Mull scallop, heritage carrots, lardo and shellfish sauce (£24). The scallop was sliced for ease of eating, and the sauce was sweet, yet full of multi layered flavours. It was a very skillfully prepared dish and refreshingly different.

We accompanied our meal with a bottle of Chilean Pinot Noir (£34) which went very well with our choice of dishes. Silver Birch offers 20 different wines by the glass - from £8 upwards - and also offers carafes of wine.

My main dish was Cornish Texel lamb, wild garlic, crispy sweetbread, girolles mushroom (£38). The lamb was sweet, perfectly pink and scattered with tiny capers. The accompaniments balanced the dish beautifully. The other main was Shetland cod, Swiss chard, chicken butter sauce and Morteau sausage (£32) - with a generous portion of cod and, again, seasoned to perfection.



As you no doubt realise by now, this was a meal of exceptional standard, and the desserts didn't disappoint either. Lemken strawberries, elderflower cream cheese and strawberry sorbet (£10) was beautifully presented and the intensity of strawberry flavour in the sorbet was an indication of the craftsmanship in the kitchen and quality of produce. Never one to resist chocolate, my husband chose brown butter chocolate delice, milk sorbet and caramelised white chocolate (£12) and declared that to be exceptionally good.



Coffee was served with chocolate fudge: not just any old chocolate fudge - this one had a subtle hint of star anise! And accompanying the fudge was a raspberry macaroon.

This restaurant is definitely deserving of a Michelin star, and I will be most surprised if it isn't awarded one very soon. The menu changes seasonally, so some of the dishes we enjoyed may not currently be available, but I'm sure it will be as excellent as before. A set lunch is available Wednesday to Saturday at £38 for two courses or £42 for three. In addition to the a la carte, a seven course tasting menu is available at £100 (£60 extra for wine pairings). There is a private dining room available that seats up to 14 or takes 30 standing.

Nathan and his brigade (including a sous chef who accompanied him from Moor Hall) are highly talented and exceptionally skilled. Their subtle use of flavours adds an extra dimension to almost every dish and the standard of service is on a par with the top notch kitchen team.



# Signs Of Twickenham

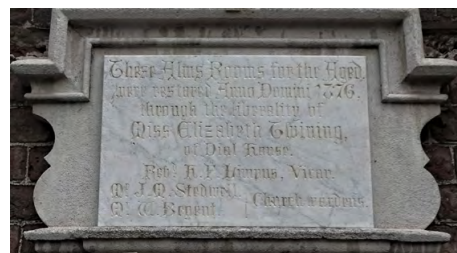
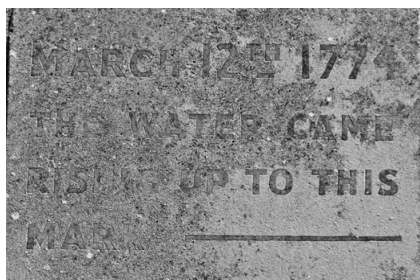
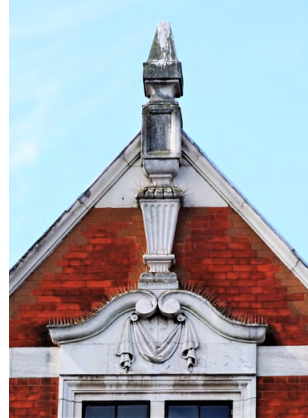
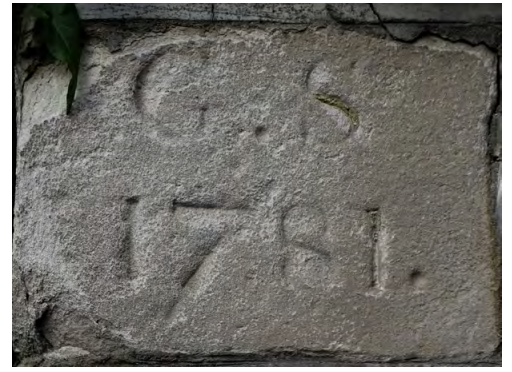
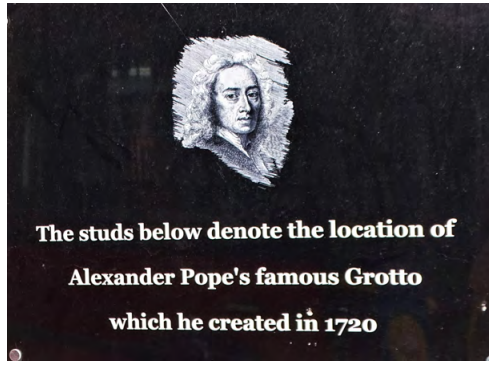
Doug Goodman Looks Around Our Town

Stop! Pause for a while and look around. You may see things you've never noticed before. We're usually too busy to walk slowly to look up and admire building, signs and sites. I enjoy exploring London and discovering its history. To go on foot from Charing Cross to St. Paul's when I'm in a rush takes about 15 minutes. However, on my last walk it took over four hours. I shot around 100 pictures on the way and with the help of a guide book I read about the origin and history of a huge number of fascinating places.

Walking through Twickenham every day to the station or shops I rarely take any notice of the surroundings but for a change I spent a morning wandering the local streets and photographing objects that attracted my eyes. The pictures here show just a few of the unusual and interesting things I came across. How many places can you identify?









By Teresa Read

### MIDDLE EAST

*“World InfoZone demonstrates the power of the Internet in promoting a participatory approach in support of lifelong learning”* – Carlos Braga, Head of Informatics and Senior Advisor International Trade, The World Bank



During my first introduction to the international challenges in Rome I had a meeting with Carlos Braga, the Head of Informatics of the World Bank (responsible for the World Bank Global Information and Communication Technologies Department). At this time, the project had a long way to go so I was pleased to receive advice from someone with so much experience and an interest in lifelong learning.

Participants at the Global Challenge 2002 in Rome were from over twenty countries; as well as meeting throughout the exhibition there were planned social events in the evening.

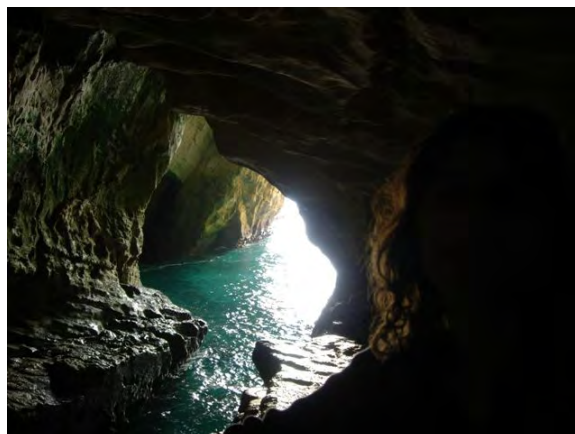
During the exhibition week a conference for a number of participants was arranged in the office of the Italian Minister of Education, Tullio De Mauro. Projects from some of the countries in the Middle East were discussed and a follow-up meeting arranged.

On the return home from my first participation in the Global Challenge I became involved in a collaborative project with a school in Israel, and various schools around the world, bringing them together in the “Linking Our World” project on the World InfoZone website.

Over forty schools around the world took part in email exchanges; pupils in Israel (the lead school), China and the USA were the most active participants.

Following the route of the Olympic Flame was one of the school projects where the World InfoZone country information could be seen to be particularly applicable, highlighting not only the country but also the emails of pupils from the country on the relevant dates on the route.

This project took place from 25 March 2004 until 8 July 2004 when the Flame was welcomed by the Mayor of Nicosia in Cyprus: *“We welcome a mighty symbol of ageless values and ideals, which, by its journey, unites peoples and continents - the global heritage of creation. Let us light in Cyprus, too, an unquenchable flame of peace”*.



**Countries in the Middle East on the WorldInfoZone website:** Bahrain, Cyprus, Iran, Iraq, Israel, Jordan, Kuwait, Lebanon, Oman, Qatar, Saudi Arabia, Syria, Turkey, United Arab Emirates, Yemen. World InfoZone – WIZ Around the World [www.worldinfozone.com](http://www.worldinfozone.com)



# General Howe's Twickenham Resting Place

By Berkley Driscoll

On Tuesday I went for an amble around Twickenham with my camera (much like Doug Goodman, see "Signs Of Twickenham" above).

I have often passed the former cemetery, and now playground, on Holly Road (Holly Road Garden of rest), but have never been in there.

I had a wonder around and sadly noticed that many of the gravestones are in poor repair. As I was leaving, a grave off to the side on its own caught my eye.

The inscription was very clear, and I was shocked to see that it was the grave of *The Right Honourable General, William 5th Viscount Howe KB PC*. I immediately recognised the name having studied the American War of Independence for my History O'Level.

General Howe was of course the Commander-in-Chief of British land forces in the Colonies during the American War of Independence.

I wonder why General Howe, formerly Member of Parliament for Nottingham, ended up buried in Twickenham?



Image: A 1777 mezzotint of Howe, Richard Purcell aka Charles Corbutt (ca 1736-ca 1766)  
From the Anne S.K. Brown Military History Collection at Brown University

# 12 weeks to go...

By Deep Patel

~ Through the Eyes of a Twickenham Shopkeeper ~

With September pretty much done, October on the way...there is just one thing at the back of my mind, and at the back of customer's minds so it seems...can you guess what?...Think of a big fat ageing man who seems to always wear the same clothes, doesn't like to shave and supposedly loves a mince pie...no... not your postman or uncle Graham (although if the description matches, why not)...I am actually talking about good old Santa! Love him or hate him...there is now NO denying it...he is coming in around only 12 more weeks...so how does that make you feel then?...

It made me feel like I need a sit-down...pheeew...only just bloomin' feels like we have just about finished summer and then suddenly the sleigh bells are ringing and suppliers are coming into my shop trying to sell me reams of multi-coloured tinsel already...one supplier even came into my shop and wanted my order for 2024 calendars...I mean come on...let me at least enjoy 2023 (or what's left of it) before I think about ordering diaries and calendars for 2024?

Last week alongside all the usual magazines that get delivered to us every week like "OK", "Hello", "Gardeners World", "Vogue" and "Classic Car Magazine" was another magazine called "You Perfect Christmas"...100 pages dedicated to Christmas recipes only...Christmas recipes?!...I was still ordering ice creams for the shop as it's been so warm recently!?

To top it all off, a gentleman came into my shop today and bought his newspaper and pint of milk...as he walked towards the front door to leave our shop, he suddenly stopped, looked back at the counter where I was and walked back...had I given him the wrong change?...as he got closer I smiled and nervously laughed and I said "I am sorry, did I give you the wrong change?"...he said "no, I just left my shopping bag here by mistake"...I said "oh! I hadn't noticed sorry". Do you know what he said next?...he turned back to me and said "that's the last of my Christmas shopping done now"...!!! The last?! I haven't even THOUGHT about the first of my Christmas shopping yet?!? Yet he had done the last?!? It's not even Halloween or Fireworks night yet?!? Is it just me, or are people getting a bit too early when it comes to Christmas??

This episode however got me thinking...how early is TOO early? Can you EVER be too early? Maybe I needed to grasp that Christmas is closer than I think...what is it, something like 11 shopping Saturdays left until Christmas?...Cor blimey...that really does sound like nothing doesn't it?

I mean...maybe it doesn't really matter? I have always notoriously been a "last minute" Christmas shopper...you know the type...at the shop doors of Argos on Christmas Eve at five minutes to 5pm before they shut, pleading with the security guard to let me in just for 2 minutes...hoping they take pity on me...only to find out that the items I want are out of stock...so buying a voucher for them in the end which ends up being kept in my families' cupboard after until it expires making the whole exercise completely and totally pointless...

This past week has inspired me to try and see how the other half live...the organized ones...to try and have a more organized Christmas? I think I am going to try it...watch this space to see if I actually do...I will report back here...until then, remember...perhaps it really never is too early to begin things that make one happy...?

**Remember...**

***"If it makes you happy...then it's never too early..."***

## MY CREATURE-KINDNESS TIP OF THE WEEK...

### **MICE CAUSING YOU ISSUES?**

Place empty bowls filled with white vinegar around where they come and they will stop coming without you having to harm them...you will get blessings in your life or have good karma for choosing a kind way too! This remedy also works to deter virtually any insect without harming them...like it & share it! For ANY specific tip to stop any "pest" or insect KINDLY (for good karma/blessings), email me: [thedeepatel@gmail.com](mailto:thedeepatel@gmail.com) or join my Facebook page: "KIND WORLD"





# Old Town Hall

**Building closed from 2 to 7 October 2023**

The much awaited project to replace the Old Town Hall main lift will commence soon. Due to initial preparations, the Richmond Reference Library and Local Studies Library & Archives will be **closed to the public all week from Monday 2 October to Saturday 7 October.**

The building will re-open as usual on Monday 9 October, however, there will be no lift access from the ground to 2<sup>nd</sup> floor until the works end by 9 December.

We apologise for any inconvenience this may cause library users.



LIBRARY SERVICES COMMUNITY

To find out more about Richmond upon Thames Library Services visit:  
[www.richmond.gov.uk/libraries](http://www.richmond.gov.uk/libraries)







## *The Hound of the Baskervilles*

by Sir Arthur Conan Doyle, adapted by John Nicholson and Steve Canny  
Putney Theatre Company at the Putney Arts Theatre until 30<sup>th</sup> September

Dartmoor, lanterns flashing in the night, a man apparently walking on tiptoes to his death, “an enormous hound”, escaped convicts, the Grimpen Mire. The plot of the 1902 Sherlock Holmes novel, *The Hound of the Baskervilles*, has become archetypal. [Endless adaptations](#) on stage and screen have taken various liberties with the original text. It’s something of a surprise then that PTC’s retelling of the tale is, plotwise at least, a relatively faithful adaptation.



Directors Perry and Lois Savill have gone to great lengths to ensure an immersive experience. Newspaper pages abound, with lurid headlines about an escaped murderer at large on the moors. Pre-show music evocatively includes *Hound Dog* and *Hounds of Love*. Techies wear t-shirts with “STAGE HOUND” printed on the back.



The cast breaks the ice nicely with relaxed audience interaction. Andrew Hall plays Sherlock Holmes, interpreting the Great Detective as somewhat vain and offhand. Tim Iredale, as Dr Watson, portrays the world’s best known sidekick as being remarkably capable and intelligent, if a little trigger-happy with his service revolver. Jacob Smith, completes the trio with great gusto and cheeriness, primarily playing Sir Henry Baskerville.

All three actors have a gift for physical comedy that enhances the jokes in the script. Whether they are miming a short and very awkward scene in a sauna, or bouncing along in a cab, the audience is constantly reduced to fits of laughter.

Locations including train carriages, saunas, and hansom cabs are represented largely by benches, but the set’s crowning achievement is 221b Baker Street, which at first glance looks thoroughly naturalistic. The world’s most famous sitting room is recreated, however, to feature a portrait of Holmes himself, and even the wallpaper makes use of the distinctive deerstalker silhouette.

*The Hound of the Baskervilles*, although an engaging, charismatic and hilarious parody of a much-loved novel, refreshingly treats its source with due respect.

Read Andrew Lawston’s review at [www.markaspen.com/2023/09/27/hound-bask-ptc](http://www.markaspen.com/2023/09/27/hound-bask-ptc)

Photography courtesy of PTC

Opera critic Thomas Forsythe discusses Instant Opera's forthcoming production of Verdi's *La Traviata* with Artistic Director, Nicholas George  
Instant Opera at Normansfield Theatre, Teddington, 6<sup>th</sup> to 8<sup>th</sup> October

TF: Thank you for the opportunity to chat about your latest production, Giuseppe Verdi's perennial blockbuster, *La Traviata*.

NG: Hello Thomas. Yes, there is no doubt about *La Traviata's* enduring appeal – it really has everything. But Verdi fell foul of the censors in Venice for setting it in his own era. They insisted it be set 100 years earlier. Intrigued, I thought about our production.

TF: Your recent *La bohème* was successfully relocated, 1830 Paris becoming Amsterdam in the 1970's. Rumour has it that Instant Opera may be moving *La Traviata*, traditionally also an early nineteenth Parisian setting, to another place and era.



NG: I was struck by the reoccurring similarity of moral hypocrisy in different eras – in particular of London in the early 1960's which was poised on the brink of one of the most fascinating social and cultural car crashes in its history.



TF: The grapevine buzzes with hints of an infamous club as the setting for a louche soiree. Can you tell us more?

NG: Avoiding spoilers - we have recreated a then renowned London night club that became a venue for such rendezvous (although touchingly innocent by modern standards). It became the epicentre of seismic events that changed this country socially and politically for ever. 'Nuff said!

TF: Very early on in the opera we have the *brindisi*, that well-known drinking song, with its wonderful chorus singing. Can we expect a few pals or a full oratorio sized crowd?

NG: Instant Opera can now boast its biggest ever chorus drawn from the best of emerging operatic talent, and some have been cast in dancing roles. They look and sound amazing.

TF: Probably, I will find myself going away with the *brindisi*; it's quite an earworm, but no doubt all those touching arias will come flooding back. I need to be quick though, as I understand [all performances are hot tickets](#) at present.

NG: Yes, we have two equally stellar casts for the matinée and evening performances. All four performances are indeed selling rapidly, so you will love whichever cast you see, if can get a ticket!

Read more of this discussion at [www.markaspen.com/2023/09/26/traviata-prev-io](http://www.markaspen.com/2023/09/26/traviata-prev-io)

Photography courtesy of Instant Opera





## WriteFest 2023

Progress Theatre, Reading until 30<sup>th</sup> September

Now the seventeenth such event, the annual WriteFest is a continuing focus for writers, new and established. Six plays are chosen to be presented, much in the style of the now-defunct Roy Purdue *New Plays Festival*, which used to take place at the Orange Tree Theatre in Richmond.

Liz Carroll, who features regularly at *WriteFest*, has two entries. *The Debt* opens alarmingly with Brenda dismembering a body, but we never find out who she was chopping up or why. *War Games* features two child evacuees who, for different reasons, find themselves back in the care of their respective grandparents. Tom and Emily are seen pretending to be fighter planes shooting each other down around a park bench, which is covered in props and costume for



on-stage changes as other characters come in. Tom is horrified to discover Emily is a girl, for he has been told by his Nan that girls are full of sin and that he mustn't play with them for fear of damnation.



*The Execution Chamber* by Arthur Burke is a fun concept comprising a play within a play ... within a play. The initial concept appears to be some kind of game show in which a man is condemned to die by The Priest. He is strapped to an electric chair, which is then switched on by an alluringly sinister masked woman Executioner. The Doctor certifies that he is dead and the 'show' is deemed a success. It turns out that the actor really is dead, and they have to work out what to do about it. The reasoning isn't clear, but that didn't detract from the darkly surreal idea.

*Lump* by Melanie Roan explores the impact of the discovery of a breast lump on a



woman's life and attitude. Interestingly, another actor became the Lump, with its own character. The woman had had 'exemplary' healthy life, eating the right things and taking exercise, and so she reacts against the ultimately inevitable chemotherapy. It was good to see the arrogant Lump getting weaker, in the same way we enjoy the bad guy's impending demise, although the woman's attitude to the Lump wasn't as hostile as you might expect. This was a reaction to the writer's real life discovery of a lump, and her awareness of her own mortality, and as such brought authenticity to the play, especially the emotional reaction superimposed on sometimes witty pragmatism.



*Scotty*, by Phillip Mannion, has two men Kit and Fancy in a bar, discussing a character called Scotty (whom we never see) and who may not even exist. There are no props apart from a table and chair. The language is Shakespearian, but the setting modern. Kit expresses his desire for Fancy, which was not quite what you'd expect of the Bard. It is certainly a challenging play.

Imagine a Michelin-starred chef, presenting a carefully prepared menu to visiting dignitaries, having his plans disrupted by their demand to present a pie with a couple of human heads in it. There you have it, *Pie* by Adam Wells. The chef and the put-upon steward have a lot of infectious fun with this idea. One of the best lines is, 'What wine do you pair it with?' A large part of the offstage reaction of the sommelier is comically bleeped out, ending with the sound of smashing glass. This was easily the most enjoyable play of the series.

Read Nick Swyft's review at [www.markaspen.com/2023/09/28/writefest-23](http://www.markaspen.com/2023/09/28/writefest-23)

Photography by Aidan Moran



# Arts Richmond Young Writers Festival returns

Arts Richmond's Young Writer's Festival has returned and opened to entries. The deadline for entries is Friday 1 December 2023.

The annual writing competition is open to all young people who either live or attend school/clubs in Richmond upon Thames.

Whether it is stories, poems, or lyrics, the competition is a chance to demonstrate writing skills of any form.

Entries are judged in four age groups with prizes for all winning entries.

In addition, all shortlisted entrants will be invited to a gala awards event in a prestigious venue in Spring 2024.

This year well known author Anthony Horowitz has agreed to support us. *I am very happy to be working with Arts Richmond and their Young Writers' Festival. I have recently moved to Richmond and love the area...in fact my next book is set here.*

*More to the point, I'm always keen to encourage young people to develop their creative skills and if they're living in this area, there's plenty to inspire them. Just walking along the river, in the park or on the green, we're surrounded by history and enchantment and there are stories everywhere.*

*Good luck. And get writing!*  
*Anthony Horowitz*

Entries can be sent by post to:

Arts Richmond Young Writers Festival, ETNA Community Centre Room 21, 13 Rosslyn Road, Twickenham, TW1 2AR

or by email to [ywentries@artsrichmond.org.uk](mailto:ywentries@artsrichmond.org.uk).

[Find out more about the competitions and how to enter.](#)



Please visit our website for more information and to submit your work: [ArtsRichmond.org.uk](https://ArtsRichmond.org.uk)

Submissions close Friday, 1st December

**Anthony Horowitz** writes:

*I am very happy to be working with Arts Richmond and their Young Writers' Festival. I have recently moved to Richmond and love the area...in fact my next book is set here.*

*More to the point, I'm always keen to encourage young people to develop their creative skills and if they're living in this area, there's plenty to inspire them. Just walking along the river, in the park or on the green, we're surrounded by history and enchantment and there are stories everywhere. Good luck. And get writing!*

Arts Richmond, Room 21, ETNA Community Centre, 13 Rosslyn Road, Twickenham TW1 2AR. Registered Charity in England and Wales No 251359



# Landmark Arts Centre announce autumn and winter programme

The Landmark Arts Centre launches its autumn and winter 2023 programme with a line-up of iconic figures from the worlds of cabaret, blues, folk, and literature.

The community arts hub will also feature live music, art fairs, comedy, wine tasting, and the return of the Teddington Beer Festival.

Olivier Award winner, [Camille O'Sullivan](#) will be in concert for an exclusive one night only performance on Saturday 30 September.

The queen of the Edinburgh Festival, known for her interpretations of the songs of Nick Cave, Brel, Waits, Bowie, Radiohead, can only usually be found touring internationally, so this will be a chance to see her in an intimate evening.

The season offers a showcase of music from top blues and indie folk groups.

Award-winning Irish/English folk band, [Ranagri](#), tour with their new album on Thursday 28 September.

The biannual art fair also takes place this season from Friday 13 to Sunday 15 October, showcasing a high-quality fine art by independent artists with an array of paintings, sculpture, photography and more.

Find out more [information about the programme and how to book tickets](#).





# Josie Rae Turnbull: Saline Shock!

Orleans House Gallery

29 September – 26 November 2023, 10am - 5pm, Tuesday - Sunday

The first of our Emerging Artists 23/24 exhibitions is open now. Come and explore the science fiction and factual fables of the biomedical industry with Josie Rae Turnbull's extraordinary *Saline Shock!*

As part of our Emerging Artists Programme, Josie Rae Turnbull presents *Saline Shock!* – a factual fable and science fiction crescendo to this real-world practice.

Many mid-20th Century 'Creature Feature' films such as *Attack of the Crab Monsters*, and *Them!* allegorised Cold War paranoia and shared apocalyptic anxieties. *Saline Shock!* imagines a near future, where predictions of further zoonotic epidemics reach absurdist conclusions.



Josie presents the 'absolute fake' to better reveal 'latent truths'. Animate, inanimate, artificial, and hyperreal collide to interrogate our excessive systems of extraction.

## More about Josie

Josie Rae Turnbull is an interdisciplinary Artist and Art Facilitator. Her work spans across textiles, sculpture, printmaking and lens-based media. She completed her MA in Fine Art and Science at Central Saint Martins in 2022, following living in Ho Chi Minh City. Josie's practice dissects the chaotic systems that affect various ecosystems.

Josie was born, grew up, and currently resides in the London Borough of Hackney.

More details [HERE](#)

# St Mary's University

## St Mary's University the Gold Standard for Student Experience

St Mary's University, Twickenham (SMU) has received a Gold rating from the Office for Students (OfS) for student experience at the University in the latest Teaching Excellence Framework (TEF). The rating acknowledges the student experience is 'typically outstanding' at SMU.



The University received a TEF Silver overall rating, meaning that delivery is typically very high quality, and was also rated Silver for Student Outcomes, recognising that student outcomes are typically very high quality also. The new TEF ratings last for four years.

Speaking of the result, St Mary's Vice-Chancellor Anthony McClaran said, "It's fantastic to see St Mary's being awarded the highest accolade of Gold for student experience, further validating our brilliant results in this year's National Student Survey.

"I am delighted that St Mary's excellence as a university has once again been confirmed in the form of this tremendous set of TEF ratings. The findings of the OfS reflect our strategic investment to enhance the experience of students and the amazing work staff do to live our values, ensuring an outstanding student experience and supporting strong student outcomes."

The University has seen great success in other recent independent rankings. St Mary's was ranked 45<sup>th</sup> in the 2024 edition of the prestigious Times and Sunday Times Good University Guide, which also rated the University fifth for Teaching Quality and seventh for Student Experience. Since 2021 SMU has seen a rise of 41 places in the Good University Guide, 25 places in the Complete University Guide and 30 places in the Guardian University Guide.

In its analysis of SMU, the TEF Panel noted that St

Mary's:

- *The panel judged there to be evidence of typically outstanding quality across the aspect as a whole.*
- *The panel judged there to be compelling evidence in the provider and student submissions and the indicators that the very high quality and outstanding features apply to all the provider's groups of students.*

Speaking of the findings, St Mary's Provost and Chief Academic Officer Prof Symeon Dagkas said, "The outcomes from TEF 2023 are fantastic, I am particularly proud that we have achieved a Gold rating for student experience and to have retained our Silver overall rating. I would like to thank colleagues across the University who consistently put students at the heart of all that they do and deliver an amazing experience and outcomes for our students."

Students at SMU continue to rate their experience at the University highly as it received outstanding feedback from graduating students in the 2023 National Student Survey (NSS). SMU was rated in the top five in London in six key themes amongst higher education providers with university status (excluding specialist providers).

The University was rated top in London for Academic Support, with a rating of 89%, and second in London for Teaching on my Course, with a rating of 88%, almost three percent above the sector average. The survey found 94% of students said that staff were good at explaining things, the top score in London, and 87% said staff made their subjects engaging.

The 2024 edition of the Complete University Guide also rated the university in the top ten nationally for student satisfaction.

SMU was also the highest riser in the Times Higher Education Research Excellence Rankings, climbing 32 places since the previous edition. In the 2021 Research Excellence Framework, the majority of research submitted by St Mary's was 4\* World Leading or 3\* Internationally Excellent in its originality, significance, and rigour. The University more than doubled its research rated by the REF in the top two three- and four-star classifications as compared to the previous research exercise in 2014.



St Mary's  
University  
Twickenham  
London



# “A Wild Life For Wildlife” Exhibition

The world’s most interactive public art exhibition for Wildlife Conservation is happening now in London!

Gillie and Marc in collaboration with the esteemed London Bridge City and ZSL (the Zoological Society of London) are thrilled to present the immersive exhibition, “A Wild Life For Wildlife,” in the heart of London. On September 19th, 2023 this captivating exhibition will bring together art, conservation, and public engagement to raise awareness and support for endangered species.

The natural world, with its animals, forests, and lakes, provides us with unparalleled joy and wonder. However, the current reality of the 6th mass extinction is alarming, as more and more beautiful creatures face the threat of extinction, primarily due to human activities. “A Wild Life For Wildlife” aims to shine a spotlight on these critical issues and empower individuals to take action before it’s too late.

Set against the stunning backdrop of London Bridge City, this exhibition will transform the heart of the city into a haven for wildlife conservation, reaching over 10 million visitors annually.



The exhibition invites the public to become an integral part of the journey with endangered animals through interactive sculptures and engaging experiences. By taking a seat on a tandem bike, joining a game of chess, or throwing a ball in a pool, visitors can connect with the stories of these imperilled species. Each sculpture is accompanied by QR codes that transport viewers to important information about the animals’ lives, needs, and threats, providing a deeper understanding of the urgent need for their conservation.

*“We believe that wildlife conservation should no longer be confined to the outskirts of society but should take centre stage in our cities and lives,” said Gillie. “With ‘A Wild Life For Wildlife,’ we aim to create an accessible and immersive experience that ignites a sense of responsibility and encourages individuals to be part of the solution. By uniting art, conservation, and public engagement, we can inspire positive change for endangered species.”*

In addition, two new sculptures will be unveiled in November to complete the sculpture trail that will make its way throughout the London Bridge City precinct. The exhibit will be in place until 2024.

For more information about the exhibition and ways to support ZSL, please visit <https://lovethelast.com/pages/a-wild-life-for-wildlife-in-london>.



# Hampton & Hampton Hill Voluntary Care Join the team

**Our volunteer car drivers provide essential support to members of the local community**

Aimed at supporting those who are less mobile, our volunteers help by providing lifts to doctor, local hospital and dental appointments and groups or activities

We always welcome new volunteers to the team and the commitment can be as little as or as much as you choose

**T:** 020 8979 9662

**E:** [enquiries@greenwoodcommunity.org.uk](mailto:enquiries@greenwoodcommunity.org.uk)

**W:** [www.greenwoodcommunity.org.uk](http://www.greenwoodcommunity.org.uk)



Hampton & Hampton Hill Voluntary Care  
Supporting Local People - Improving Local Lives

1a School Road Hampton Hill, TW12 1QL

Registered in England & Wales Company No. 6431882 Charity No. 1145070





# RFU Statement: Jersey Reds

“The RFU has been informed that Jersey Reds has taken the decision to cease trading following unsuccessful discussions with both existing and potential new investors.

We, like their players, staff and supporters are deeply concerned by this news.

The RFU is working with the Rugby Players Association to support the players.

“It is extremely disappointing that investors would take decisions at this early point in the season to place the club in such a position.

Championship clubs had clear confirmation from the RFU on funding for the 2023/24 season and we have been working with the Championship and Premiership Rugby on the new Professional Game Partnership and shape of Premiership 2 with funding levels to be confirmed at the end of this calendar year.

The Championship has been fully involved in these discussions since February which are aimed at stabilising and strengthening the professional game.



“This news will clearly impact the season for the Championship league and Premiership Rugby Cup competition, which was introduced this season as a way to offer a new format to supporters, bringing with it the experience of playing Premiership sides and the opportunity to welcome new fans into Championship clubs and assist them to grow new audiences.

“Further information on the impact of this to the Premiership Rugby Cup and Championship League season will follow.”



# Highlights, report and reaction: Brentford 0 Arsenal 1

Brentford's valiant second-half performance wasn't enough to prevent a 1-0 Carabao Cup defeat to Arsenal on Wednesday night; Reiss Nelson scored the only goal of the game as the Bees were defeated in the third round; Thomas Frank: "The second half was top"

Written by Brentford Football Club

**Reiss Nelson's early goal was enough to settle Wednesday night's Carabao Cup tie at Gtech Community Stadium, as Arsenal advanced to the fourth round after a 1-0 win over Brentford.**

Nelson capitalised on an unfortunate Zanka backpass to roll the Gunners ahead after just eight minutes.

The home side struggled to put the Arsenal goal under sustained pressure before the break, but it was a different story in the second half.

Aaron Ramsdale made two outstanding saves to deny Yoane Wissa and Frank Onyeka, while substitutes Saman Ghoddos and Keane Lewis-Potter both saw shots cleared off the line as the away side clung on to progress.



## **Arsenal take early lead at Gtech Community Stadium**

Thomas Frank stuck largely with the team which hosted Everton in the Premier League four days ago; the two changes seeing Zanka and Onyeka replace Lewis-Potter and Mathias Jensen.

Arsenal made eight changes from their last Premier League outing - Sunday's 2-2 draw with Tottenham Hotspur. Ramsdale replaced David Raya in goal, with Emile Smith-Rowe, Jorginho, Nelson and Takehiro Tomiyasu among others to come in.

The away side dominated the ball in the early stages, looking to open up gaps in the Bees' three-man defensive line.

For all Arsenal's domination of possession, it was a Bees mistake which allowed them to take the lead after eight minutes. Zanka's backpass, intended for Mark Flekken, was intercepted by



Eddie Nketiah on the right angle of the box, he cut it across for an unmarked Nelson to pass it home from the penalty spot.

With their tails up, Arsenal made it hard for Brentford, moving the ball crisply around the Gtech pitch and forcing the Bees to do a lot of chasing.

Efforts for the home side came mainly on the break, with Wissa just failing to connect with Vitaly Janelt following Bryan Mbeumo's surging run.

The German midfielder then connected sweetly with an effort from the edge of the box, only for it to bounce to safety off Takehiro Tomiyasu.

Despite the amount of defending they were being asked to do, Brentford stuck to their task manfully. Emile Smith-Rowe was denied, first by Ethan Pinnock's body and then an outstretched Flekken leg; Nathan Collins made a block from Kai Havertz; and Pinnock timed his challenge perfectly to nip the ball away from Nketiah in the box.

Brentford's best opening of the half fell to Wissa late on, but he swept Christian Norgaard's cross wide from 15 yards.

### **Bees unlucky in dominant second-half display**

**If Arsenal had been on top in the first half, it was nothing compared to the Bees' domination of the second period.**

An early Norgaard shot which unfortunately hit the offside Wissa signalled the Bees' intent.

Now it was Arsenal hemmed in their own half, struggling to get out, while Brentford, roared on by the home fans, sensed blood.

Onyeka shot wide from Norgaard's cross and the impressive Aaron Hickey struck an effort into Ben White at close range.

At the other end, Nketiah's effort, deflected away by the body of Pinnock, was Arsenal's sole attacking contribution to the half's opening quarter hour.

The introduction of Jensen and Ghoddos just past the hour only increased the west Londoners' attacking threat. Ghoddos's dipping volley was headed away to safety by Jakub Kiwior, before Ramsdale's fingertips somehow managed to divert Wissa's low shot onto the post following a Jensen cutback.

Those changes also saw the Bees commit more men forward, giving Arsenal space on the break. Nelson's effort clipped the outside of the post on its way through, and Flekken stayed big to deny Nketiah at his near post as Mikel Arteta's side tried to put the game to bed.

Gabriel Jesus, Martin Odegaard, Mohamed Elneny and Oleksandr Zinchenko were all introduced by the away side to try and stem the tide of Brentford attacks to little effort.

Janelt lashed over the bar from the edge of the box and Ramsdale beat away Onyeka's half-volley, both from Wissa assists.

Tomiyasu was then perfectly placed to clear Ghoddos's shot out from under his own crossbar, before an even better sliding intervention from Kiwior somehow kept Lewis-Potter's angled shot out after it had beaten Ramsdale. In between those chances, Zanka did put the ball in the net but the flag went up for offside against Collins.

With everyone, including Flekken, up for a late corner, Wissa headed into the arms of Ramsdale, before the Arsenal goal survived one final late scramble.

Jensen's delightful cross was missed by Janelt and Mbeumo subsequently cracked the loose ball off the post, only to realise the flag had gone up for a foul.

Peter Bankes blew the final whistle before play could restart, with the Brentford crowd quick to show their appreciation for their team's efforts.

**Brentford:** Flekken; Collins, Pinnock, Zanka (Ajer 82); Roerslev (Ghoddos 63), Onyeka (Lewis-Potter 79), Norgaard, (Jensen 63), Janelt, Hickey (Olakigbe 79); Mbeumo, Wissa

**Subs not used:** Strakosha, Balcombe, Yarmoliuk, Brierley

**Arsenal:** Ramsdale; White (Zinchenko 69), Gabriel, Kiwior, Tomiyasu; Jorginho, Havertz; Nelson (Elneny 82), Smith-Rowe (Odegaard 82), Sagoe Jr (Jesus 68); Nketiah (Cedric 87)

**Subs not used:** Hein, Sweet, Walters, Cozier-Duberry

### **Frank takes positives from Arsenal performance**

Head coach Thomas Frank was pleased to see his side bounce back from a disappointing defeat to Everton on Saturday with a much-improved performance in the Carabao Cup.

"I asked for a bounce-back performance from the players, and they gave me that," he said.

"The second half was top. We pushed Arsenal back, created a lot of good chances and were very unlucky not to score. The margins didn't drop our way.

"I was very pleased with the performance and that's what we need to continue with going into the game [against Nottingham Forest] on Sunday."





# ULEZ expansion making money off the poorest of Londoners, says Conservative mayoral candidate

The Conservative candidate for London Mayor Susan Hall has said she would reverse the ULEZ expansion on the first day she took office.



Speaking to [GB News](#), Ms Hall said the latest charges were “hitting the poorest the most.”

“Some of the stories colleagues of mine and myself get told are absolutely heartbreaking,” she said.

“People cannot afford to replace their cars. The scrappage scheme is up to £2000 per car but you can’t buy a compliant car for £2000.

“And if people have to replace their cars, they’re having to take on loans for this, and in a cost-of-living crisis this is absolutely appalling.

“He’s [Saqid Khan] not listening to what anybody says. A London mayor should listen to Londoners want and this is not what Londoners want.

“He won’t back down on it. Even some of his own labour colleagues have said, ‘don’t do it’, but he doesn’t care. He just does exactly what he wants.

“People in inner London don’t mind it so much because you only have to go to the end of the road and you can get a bus or a train. You can’t do that in the outskirts of London.

“So people do rely on their cars, and I saw that piece on Sky the other morning: Kemi Badenoch was completely correct. Poor people do own cars because they often do shift work. They go into London late at night or through the nights.

“They rely on their car and they have to have a car because there isn’t public transport.

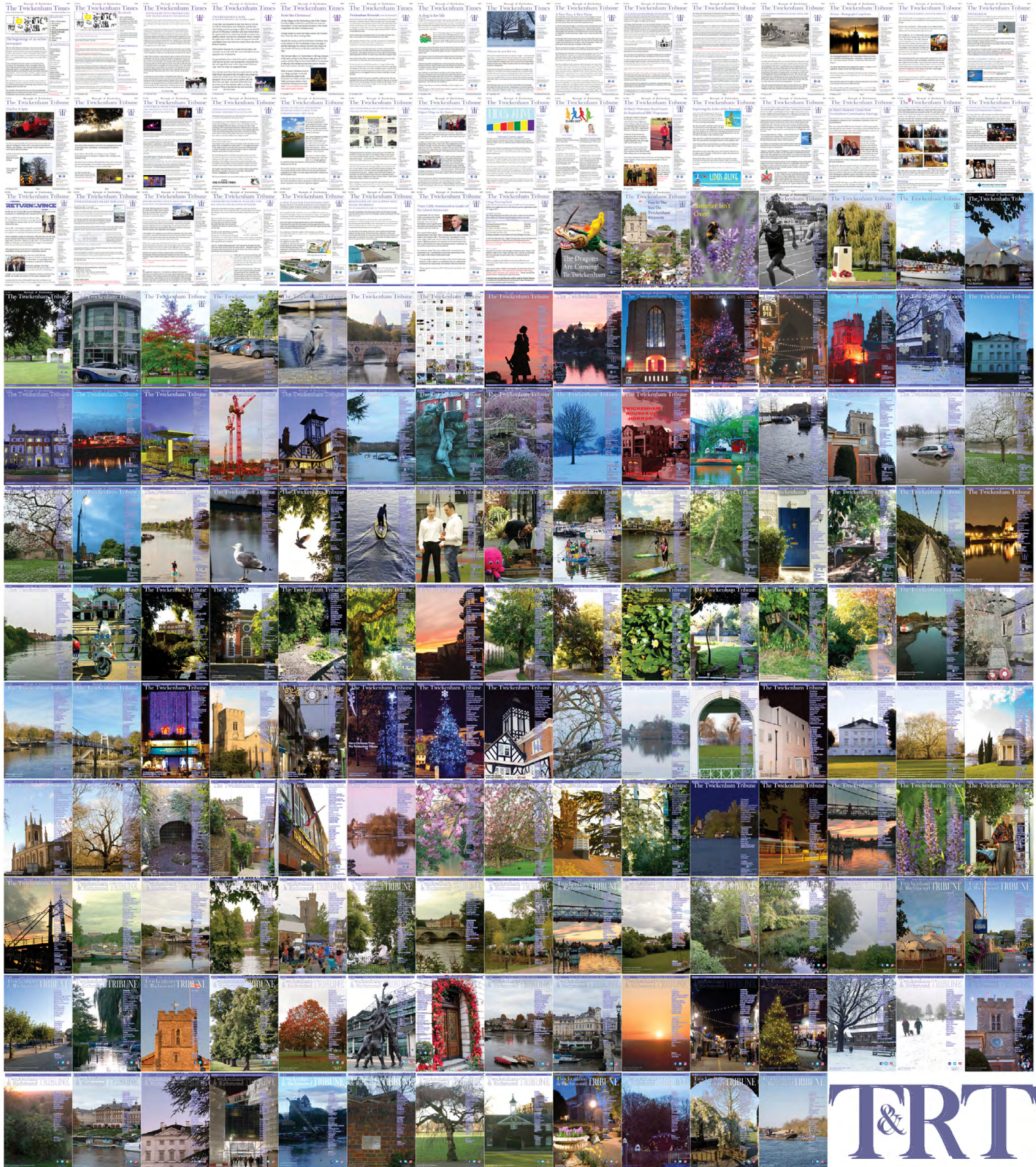
“TfL’s own impact assessment said the extended ULEZ would make virtually no difference whatsoever and he knows that there are other ways of doing this.

“It’s about money. £200 million they reckon they’re going to make out of this a year off the back of the poorest of Londoners.

“That’s not good enough, a mayor shouldn’t do that.”



# 360 editions of the **Twickenham & Richmond Tribune** online - Lots to read: News, Reviews, History, Sports and On-going Sagas in the Borough of Richmond upon Thames





Half Page

Quarter Page  
Landscape

Quarter Page Portrait

Eighth Page

Eighth Page  
Landscape

Example advert sizes shown above

Thousands read The Twickenham & Richmond Tribune

If you are reading this you could be advertising your business with  
The Twickenham & Richmond Tribune. Community rates are  
available

Contact: [advertise@TwickenhamTribune.com](mailto:advertise@TwickenhamTribune.com)

View ad details at [www.TwickenhamTribune.com/advertise](http://www.TwickenhamTribune.com/advertise)

**Contact**

[contact@TwickenhamTribune.com](mailto:contact@TwickenhamTribune.com)  
[letters@TwickenhamTribune.com](mailto:letters@TwickenhamTribune.com)  
[advertise@TwickenhamTribune.com](mailto:advertise@TwickenhamTribune.com)



**Published by:**

Twickenham & Richmond Tribune (in association with World InfoZone Limited)

Registered in England & Wales

Reg No 10549345

The Twickenham Tribune is registered with the ICO under the Data Protection Act, Reg No ZA224725

©Twickenham & Richmond Tribune. All rights reserved. No part of this publication may be used or reproduced without the permission of Twickenham & Richmond Tribune. While we take reasonable efforts, this online newspaper cannot be held responsible for the accuracy or reliability of information. The views and opinions in these pages do not necessarily represent those of The Twickenham & Richmond Tribune.

[Terms & Conditions](#)